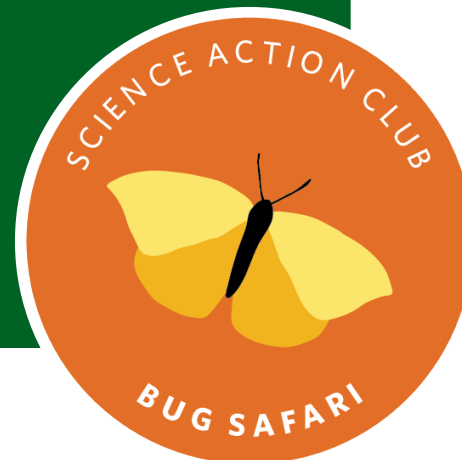
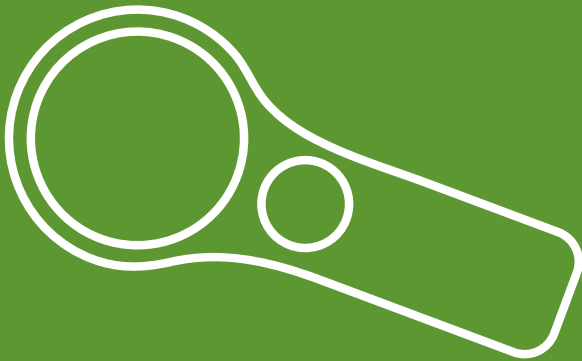
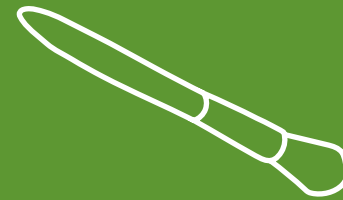


Uploading to iNaturalist

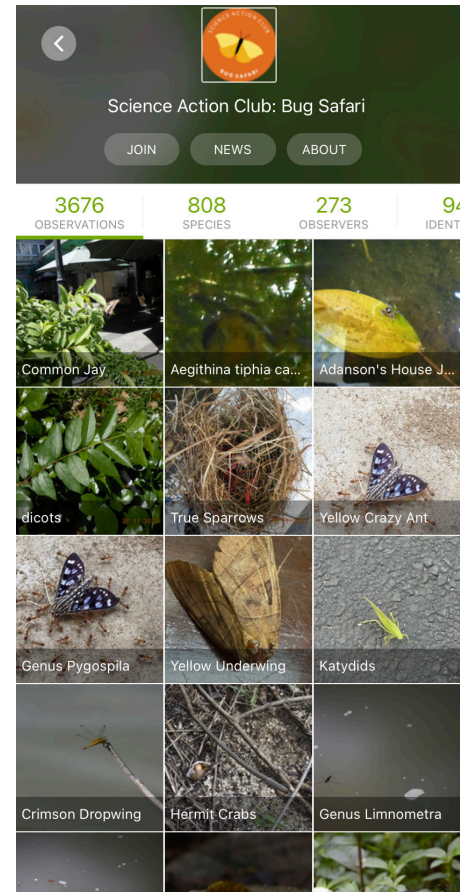
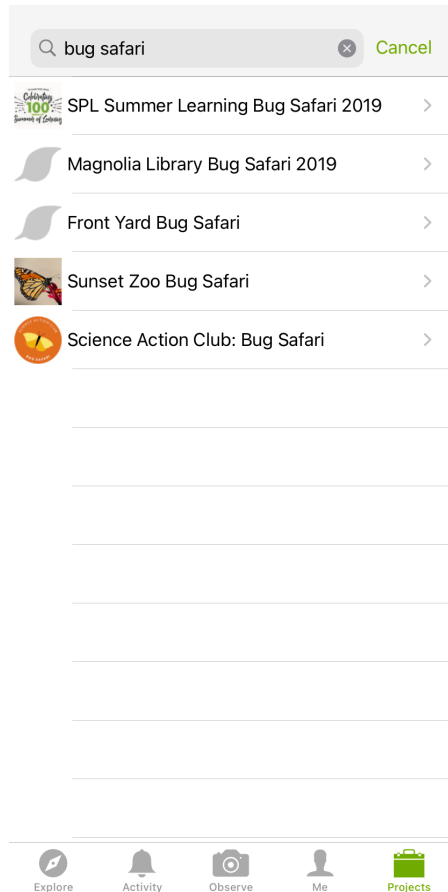


1

Downloading the iNaturalist app

Congratulations, you have taken the first step and stepped into your role as a community scientist. It's time to connect with scientists through iNaturalist to help identify your observations.

Using a mobile device download the iNaturalist app. Have a trusted adult create an account so you can upload your observations. Join the Bug Safari project. To join the Bug Safari project tap the projects tab in the app and search for "Bug Safari" You should see a project with an orange circle that says "Science Action Club: Bug Safari". Click into the project and tap join in the top left hand corner.



2

Uploading your observations

Now you will upload your observations. Use the Bug Safari and iNaturalist guide to upload your findings. When you post an observation to iNaturalist, it also posts the date, time, and location of that observation, which is important for researchers to know.

Once your observation is in iNaturalist, other citizen and community scientists on iNaturalist will view it and help refine the identification. When two or more community scientists on iNaturalist agree on the identification, your observation becomes Research-Grade. Research-Grade observations are sent from iNaturalist to the Global Biodiversity Information Facility (GBIF), which is a scientific database used by thousands of researchers all over the world.

