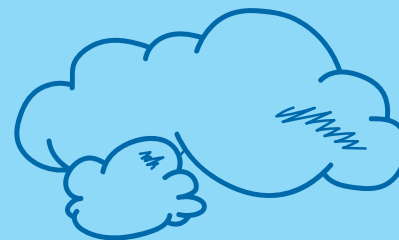


# Uploading to the GLOBE app

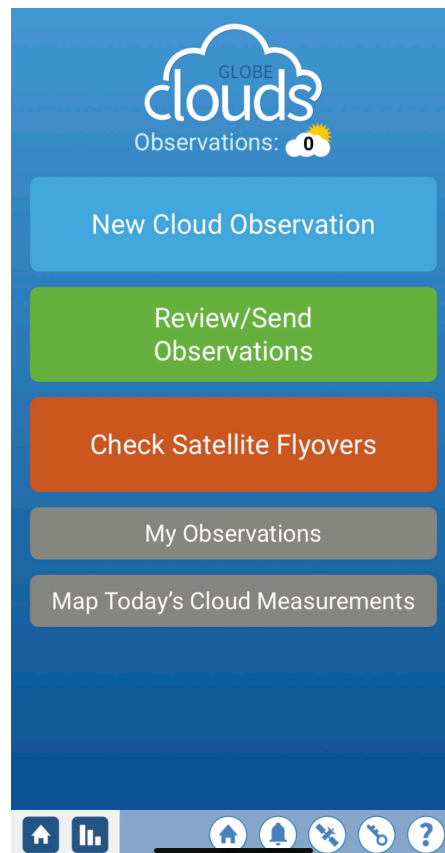


# 1

## Downloading the GLOBE app

Congratulations! You have taken the first step into your role as a citizen and community scientist. It's time to share your observations with scientists at NASA.

Using a mobile device download the GLOBE app or visit their website. Once you've downloaded the app or accessed the website, have a trusted adult create an account so you can upload your observations. Select the Clouds protocol. The app will give you a description of all the information you will need to upload a Sky Survey. This should match the observations you have noted in your Sky Survey chart. Next, select New Cloud Observation to upload your data.



# 2

## Inputting your data

The app will automatically input the date and time. If this is different from what you recorded, change the date and time. If you enable location services the app will automatically give you the exact coordinates of where you are conducting your Sky Survey. Otherwise you can enter your location manually. After you have verified the time, date, and location hit the green “next” button.

Time and Location

Enter the local date and time of the observation:

2022-12-01

09:28:17

Enter location coordinates:

Latitude: 37.7700

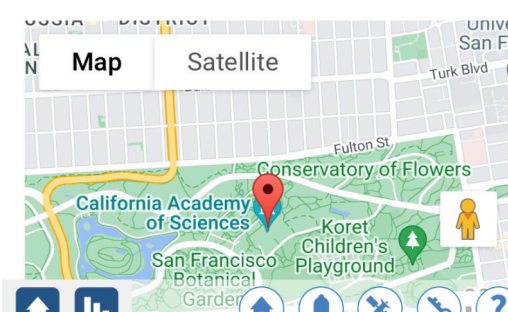
Longitude: -122.4661

*It appears that the location provided by your device is incorrect (accuracy = 1414). Please check your coordinates before proceeding.*

Use 2 fingers to move map

Map

Satellite



The Clouds protocol will take you through the Sky Survey chart in the order you did your observations. Enter the information from your Sky Survey chart. Lastly, it will invite you to submit photos of the sky.



Take pictures of the sky?

Take Pictures

Add Pictures Manually

Skip Pictures



# 3

## Submitting your Sky Survey

Tap Send All Cloud Data Now to send NASA your very first Sky Survey!

Observation Complete

Thank you, your data has been stored successfully on your device and is ready to send to GLOBE.

Send All Cloud Data Now

Review/Edit Observations

Share

New Cloud Observation

My Observations

