

How to Draw a Lake

Explore this Article ■ **Steps** ■ Questions & Answers ■ Things You'll Need

Co-authored by **18 contributors**

Last Updated: November 13, 2021

Drawing a calm, peaceful lake is fairly simple. Much of the realism comes from using the right colors and strokes to create the right atmosphere for a lake setting.

Things You'll Need

- ☐ The things you will need is a sheet of any kind of paper.
- ☐ You will need a sharpened pencil with an eraser.
- ☐ Colored pencils (optional)

Steps



- 1 Look at photographs of lakes for inspiration.** See how their shapes are often nebulous and defined by the surrounding environment. Therefore, it doesn't really make sense to draw the shape of a lake.



2 Instead, decide how much space you'd like the lake to take up, and roughly what area it would encompass. Feel free to sketch these boundaries in pencil as a guide.



3 Decide where you would like this lake to be set. Is it huddled amongst a forest of trees, or is it part of a marsh teeming with wildlife? Draw in the surrounding environment, as appropriate.



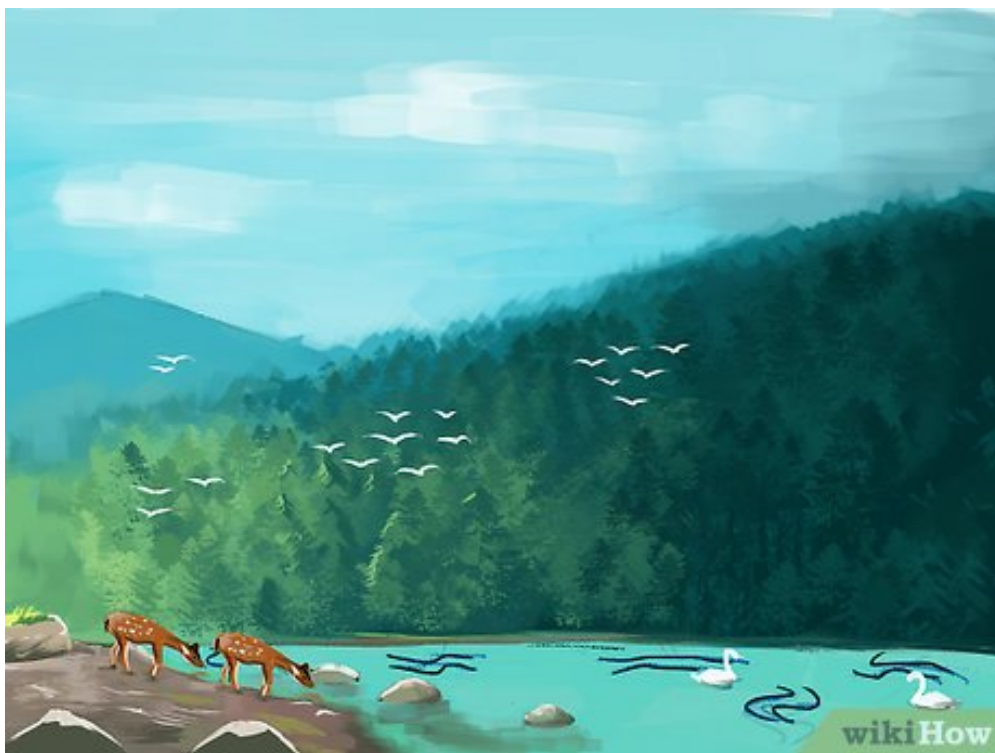
4 Lakes often are surrounded by water plants with thin blades. Draw a series of curved lines that start near one circular point and fan out towards the outside. One group of these blades represents one water plant, but the boundaries between each plant are often unclear, as they grow over each other.



5 Trees are great addition to lake scenes, so learn how to draw different types of trees **with leaves**. Start with this [basic type](#) or the [bonsai](#).



6 Draw animals! Birds (flying or stationery), frogs, bugs and insects are all great additions to make a lake scene lively.



7 Decide what time you would like your drawing to be set, and draw in the sky. If it's a sunrise or sunset, fill the sky with beautiful oranges, yellows, pinks, purples and reds. If it's the middle of the day, go with a crisp blue day with clouds.



8 Don't forget to add in the lake's reflection! Make sure the sky you picked and the surroundings are hazily reflected in the lake's waters. Reflections should be fainter and fuzzier than the actual thing, so use lighter strokes and pay less attention to detail for this part.



Community Q&A

Question

How should I color a lake?



Community Answer

There are lots of options! I would recommend using watercolors, specifically a mixture of aqua and turquoise. You could also use colored pencils, crayons, pastels, paints, etc. Use lots of shades of blue and blend them together! You could also try sprinkling some rock salt on the lake after painting for a ripple effect.

Helpful 12 Not Helpful 3

Question

How should I draw the ripples?



Thorn15
Community Answer

Get a shade that's a little darker than the one for the main body of water and draw very loose "C" and "S" shapes in the lake. On a little bit of the lake, highlight the edges of these shapes with white. Don't do this on the whole of your lake. If you use hills, like in the picture, then highlight the ripples on the side that has fewer/lower hills.

Helpful 5 Not Helpful 6

Question

How do I draw just the lake?



Thorn15
Community Answer

Draw a complete, flat circle, as shown in step two. Position it anywhere you want on the page. Follow the guidelines for just the lake portion, perhaps adding some long bits of grass and reeds to the edge of the lake.

Helpful **8** Not Helpful **5**

About This Article

wikiHow is a “wiki,” similar to Wikipedia, which means that many of our articles are co-written by multiple authors. To create this article, 18 people, some anonymous, worked to edit and improve it over time. This article has been viewed 96,199 times.



190 votes - 57%

Co-authors: **18**

Updated: **November 13, 2021**

Views: **96,199**

Categories: **Drawing**

<https://www.wikihow.com/Draw-a-Lake>

The text and visual content in this PDF is intended only for your personal, non-commercial use. Any commercial reproduction of the contents of this document without the express written permission of wikiHow, Inc., is prohibited.